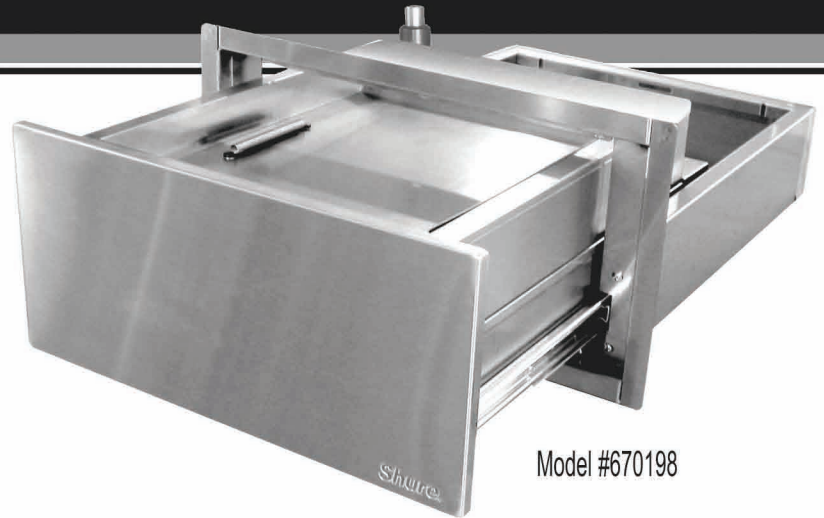


THRU-WALL DRAWERS

ShureSafe Security
Security Drawers • Pass-Thru Products • Intercom Systems

Thru-Wall Security Drawers are an ideal solution for pharmacies, convenience stores, correctional facilities, law enforcement, financial facilities, fast food restaurants and government facilities.



Model #670198



Model #672319

Features:

- Versatile design for administrative, retail and convenience store environments
- Model #670198 is designed for installation in up to 8" thick walls
- Model #672319 is designed for installation in up to 4 1/2" thick walls
- Model #672319 features a secured storage compartment with a forward-hinged cover that conceals contents from customer view
- Removable full-length deal tray for administrative, cash, credit and small transactions
- Removing the deal tray exposes a large transfer area
- Both drawers feature a UL® Level 3 bullet resistant faceplate insert

Optional ACCESSORIES

Model #	Item
670199	Free-Standing Cup Holder



**Free-Standing
Cup Holder**
Model #670199

Model #670198

Overall Size	18"W x 24 15/16"D x 9"H
Frame Face	21 3/8"W x 11 1/8"H
Transfer Area	13 5/8"W x 17 3/4"D x 8 5/8"H
Wall Opening	19 5/8"W x 9 1/2"H
Weight	67 lbs.

Model #672319

Overall Size	18"W x 25"D x 8 15/16"H
Frame Face	21 3/8"W x 11 1/8"H
Transfer Area	13 3/4"W x 9 5/8"D x 7 7/8"H
Wall Opening	19 5/8"W x 9 1/2"H
Weight	65 lbs.

**See Our Website For Our Entire Line Of Quality
Security Drawers And Pass-Thru Products!**