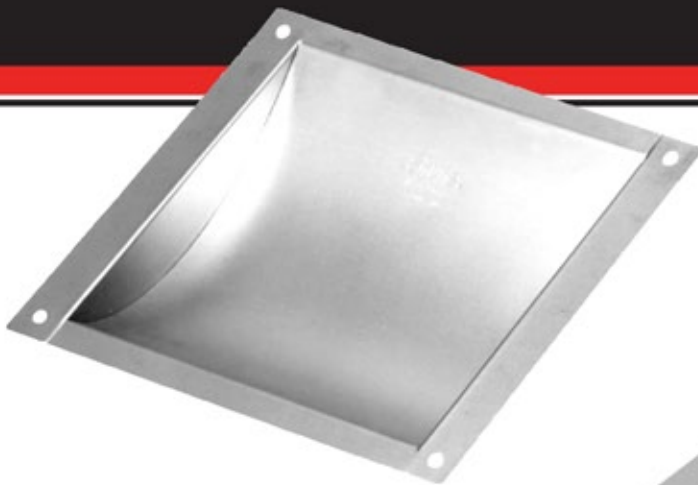


DEAL TRAYS

ShureSafe Security

Security Drawers • Pass-Thru Products • Intercom Systems • Safety & Storage Solutions



Model #670100



Model #670094

Deal Trays are an ideal solution for transactions in any market including 24 hour facilities.

Features:

- Deal Trays are a perfect security solution for cashier windows or other secured areas
- #670100, #670158, #670159 are stationary for installation in countertops
- #670094 features a stationary base and a sliding tray for installation in countertops
- All Deal Tray models have a curved interior for easy coin and currency removal
- Custom sizes available upon request

Model #670100

Overall Size	10"W x 8 1/8"D x 1 5/8"H
Transfer Area	8"W x 6 3/4"D x 1 9/16"H
Center Cut Out	8 1/4"W x 7 1/8"D x 1 7/8"H
Weight	Approx. 3 lbs.

Model #670158

Overall Size	12"W x 10"D x 1 5/8"H
Transfer Area	10"W x 8"D x 1 9/16"H
Center Cut Out	10 1/4"W x 8 1/4"D x 1 7/8"H
Weight	Approx. 4 lbs.

Model #670159

Overall Size	14"W x 1 5/8"D x 12"H
Transfer Area	12"W x 1 9/16"D x 10"H
Center Cut Out	12 1/4"W x 8 1/4"D x 1 7/8"H
Weight	Approx. 5 lbs.

Model #670094

Overall Size	10"W x 15"D x 1 1/2"H
Transfer Area	7 3/4"W x 6 1/4"D x 1 1/4"H
Center Cut Out	8 1/4"W x 13 1/4"D x 1 9/16"H
Weight	Approx. 7 lbs.

See Our Website For Our Entire Line Of Quality Security Drawers And Pass-Thru Products!

Shure Manufacturing Corporation

